



**Brand: BendPak**  
**Model: XPR-9S-LP**  
**SKU: 5175757**  
**Description: 9,000-lb. Capacity Two-Post Lift / Short Column Symmetric / Screw Pads / Low-Pro Arms**

The safe and rugged XPR-9S-LP two-post lift features our exclusive Low-Pro™ arms that accommodate lowered sports cars and those vehicles with exclusive lift points located on the extreme outer edges of the chassis. A telescoping overhead structure provides the convenience of wide or narrow installation wrapped up into one configurable package. This unique configurable design allows you to choose the best setting for your specific space or vehicle lifting requirements.



The highly sophisticated yet simple and dependable XPR-Series design requires very little service or maintenance for an overall lower cost of ownership. All BendPak's XPR two-post models feature dual "direct-drive" low-pressure cylinders, maintenance-free UHMW load bearings, single-piece columns, extra-tall lifting carriages and triple-telescoping arm configuration for increase arm positioning versatility.

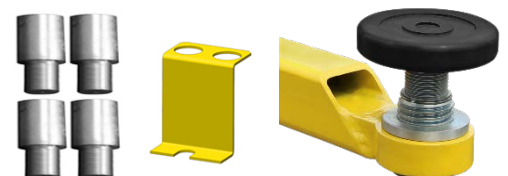
The XPR-9S-LP features double-telescoping screw pads with gouge and tear-resistant polyurethane pads to help increase workplace safety and reduce operating costs. A set of our 63 mm stacking adapters included as standard accessories.

**Features**

- 9,000-lb. lifting capacity
- Telescoping Low-Pro™ arms accommodate lowered sports cars and those vehicles with lift points located on outer edges of the chassis
- Expandable top beam accommodates wide or narrow configuration
- Single-piece columns
- Dual hydraulic direct-drive cylinders
- Oversized 53" tall carriage for superior strength and durability
- Electric / hydraulic power system
- Large, 17" x 19" A36 steel base plate
- Self-lubricating dura-glide UHMW polyethylene bearing system
- Single-point safety release
- Safety locks in each column spaced every 3"
- Automatic arm restraints
- Heavy-duty 1/2" aircraft-quality equalizer cables
- Oversized cable sheave diameter reduces cable fatigue
- Versatile drop-in contact pads with stackable adapters
- 4-piece 63 mm stackable adapter set comes standard

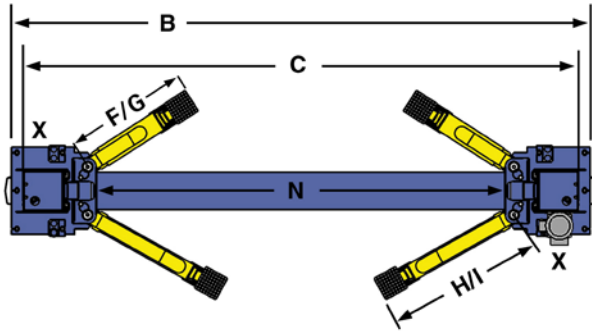


Low-Pro™ accommodate sports cars and vehicles with ground effects

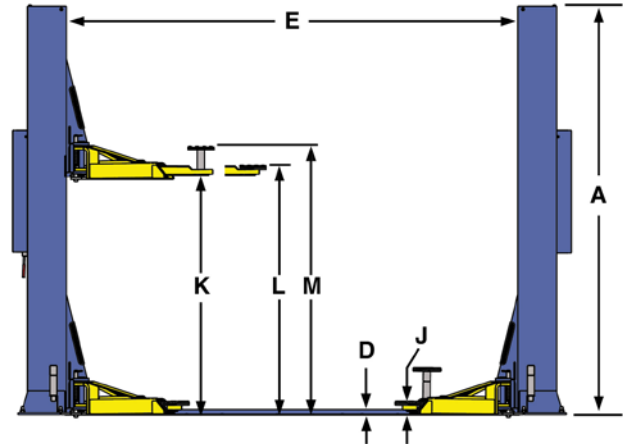


Double-telescoping screw pads and stackable risers

## FLOORPLAN



NOTE: Power unit can be located at either X location.



MODEL	XPR-9S-LP
Lifting Capacity*	9,000 lbs. / 4,082 kg
*Max Capacity / Front Axle	4,500 lbs. / 2,041 kg
*Max Capacity / Rear Axle	4,500 lbs. / 2,041 kg
<b>A</b> - Height Overall: (*)	113" / 2,870 mm
<b>B</b> - Width Overall: (NARROW)	132" / 3,353 mm
<b>B</b> - Width Overall: (WIDE)	145" / 3,683 mm
<b>C</b> - Width Outside of Columns: (NARROW)	126-3/4" / 3,225 mm
<b>C</b> - Width Outside of Columns: (WIDE)	139-3/4" / 3,555 mm
<b>D</b> - Floor Pan Height:	1-3/4" / 44 mm
<b>E</b> - Inside Columns: (NARROW)	105" / 2,667 mm.
<b>E</b> - Inside Columns: (WIDE)	118" / 2,997 mm.
<b>F</b> - Reach (Front Arm Min.):	28-1/2" / 724 mm
<b>G</b> - Reach (Front Arm Max.):	47-1/2" / 1,206 mm
<b>H</b> - Reach (Rear Arm Min.):	28-1/2" / 724 mm
<b>I</b> - Reach (Rear Arm Max.):	47-1/2" / 1,206 mm
<b>J</b> - Min. Pad Height:	4.25" / 108 mm
Screw Pad Adjustment:	1.75" / 44.45 mm
<b>K</b> - Rise:	72" / 1829 mm
<b>L</b> - Max Lift Height (With Pad):	78" / 1981 mm
<b>M</b> - Max Lift Height (Pad + 63 mm Adapter):	80.5" / 2044 mm
<b>N</b> - Drive-Thru Clearance: (NARROW)	93" / 2,362 mm
<b>N</b> - Drive-Thru Clearance: (WIDE)	106" / 2,692 mm
Motor (**)	220 VAC / 60 Hz / 1Ph
Time of full Rise:	45 sec
Max Load Per Arm:	2,250 lbs. / 1,021 kg

\*\* Other power options available.

- 190/208-230 / 50-60 HZ. / 3 PH.
- 380/440-460V / 50-60 HZ. / 3 PH.
- 415 VAC / 50 Hz. 3Ph.

Special Voltages Available Upon Request.

The design, material and specifications are subject to change without notice.